

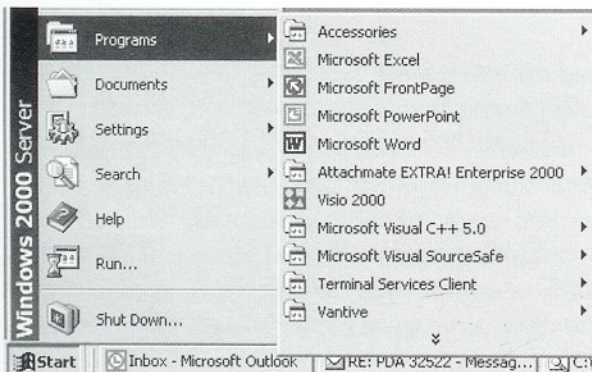


INSTALL AND DEPLOY ATTACHMATE EXTRA! ENTERPRISE 2000

Windows 2000 & application assigning

As a Windows 2000 administrator, take advantage of Windows 2000 policy-based management features to deploy applications to your users' desktops. Applications can be deployed in one of two modes: assigned or published. As part of its goal to address total cost of ownership (TCO) issues for maintaining Microsoft networks, Microsoft has implemented key technologies in Windows 2000 Server, including application assigning. When you want a group of users to *have an application installed* on their computers, you assign an application.

For example, most large organizations will have certain users that need to access applications on mainframe or AS/400 systems. Assigning EXTRA! for these users would advertise the application shortcut on their Start menus. When EXTRA! is selected from the Start menu for the first time, it is then installed. *Note: Although EXTRA! looks like it is installed on this computer, it is just being advertised.*



USE APPLICATION ASSIGNING TO INSTALL AND DEPLOY EXTRA!® ENTERPRISE 2000

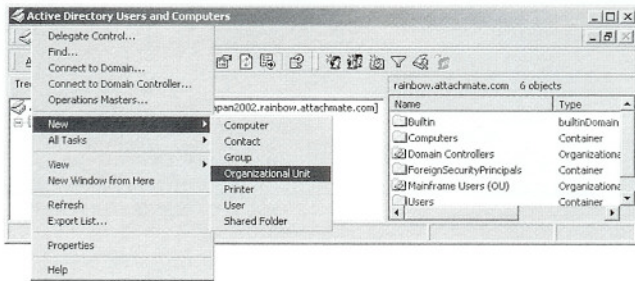
Before continuing with this example, you will need an appropriate Windows 2000 environment. In addition, you should be an administrator of a Windows 2000 server that has been promoted to domain controller and has Active Directory installed (via the Windows 2000 utility "dcpromo.exe").

For this example, we will use a Windows 2000 Server that is a domain controller with the DNS rainbow.attachmate.com. We are going to create an organizational unit within Active Directory, create users within that organizational unit, and assign Attachmate's EXTRA! Enterprise 2000 application to these users.

CREATE A NEW ORGANIZATIONAL UNIT IN ACTIVE DIRECTORY

Load the "Active Directory Users and Computers" utility found in the Start\Programs\Administrative Tools menu option. When loaded, the pane on the left shows the folders created by default, which represent computers, users, groups, and other network resources to be managed by Active Directory.

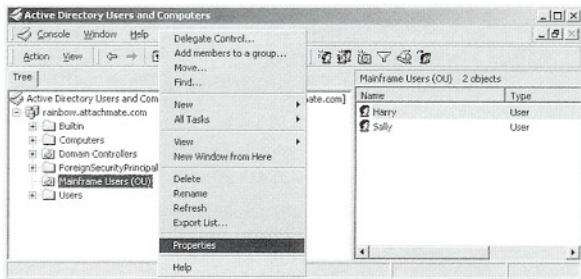
Visit our Web site at www.attachmate.com



Create a new organizational unit by clicking on the Action menu option from the Active Directory Users and Computers utility and choose New\Organizational Unit. We are naming our new organizational unit "Mainframe Users (OU)".

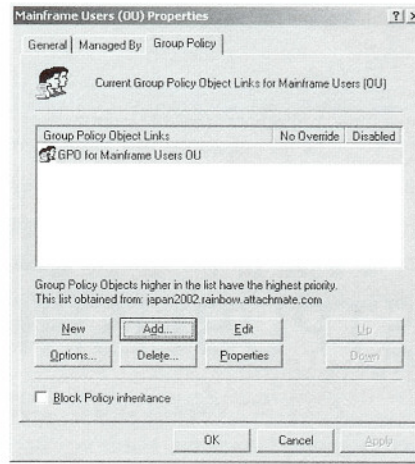
Create users within the new organizational unit. We are creating users Harry and Sally within the "Mainframe Users (OU)" organizational unit by right-clicking on our organizational unit and choosing New\User.

CREATE USERS IN THE NEW ORGANIZATIONAL UNIT



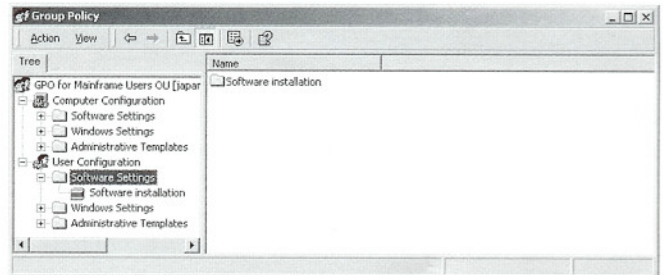
Use the Group Policy snap-in to create policies for our new organizational unit. Get to the Group Policy editor from within the "Active Directory Users and Computers" MMC snap-in. In the console tree, right-click "Mainframe Users (OU)" organizational unit, and then click on Properties.

"MAINFRAME USERS (OU)" PROPERTIES AND GROUP POLICY TAB



A dialog box allows you to edit group policy. Click New to create a new Group Policy object, and then click Edit. The Group Policy tab gives the administrator access to edit group policy.

CONFIGURE MAINFRAME USERS DESKTOPS AND CHOOSE APPLICATIONS



We will apply our settings to "User Configuration." From this Group Policy interface, we can assign EXTRA! to our mainframe users.

Under User Configuration, click on the plus sign next to the "Software Settings" folder to view the "Software Installation" icon. The administrator uses Software Installation to choose which applications will be assigned to users.

Continued on page 14